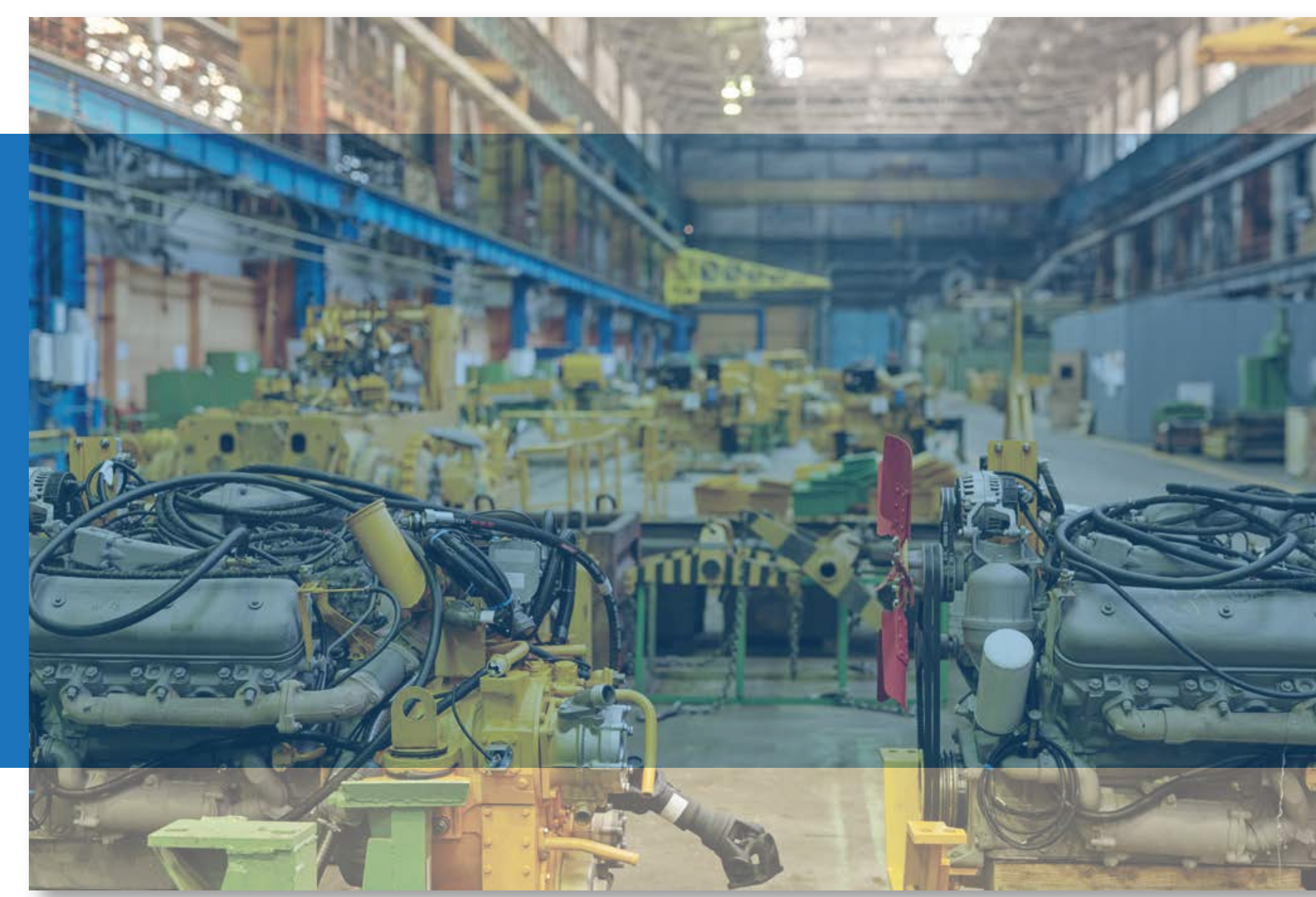
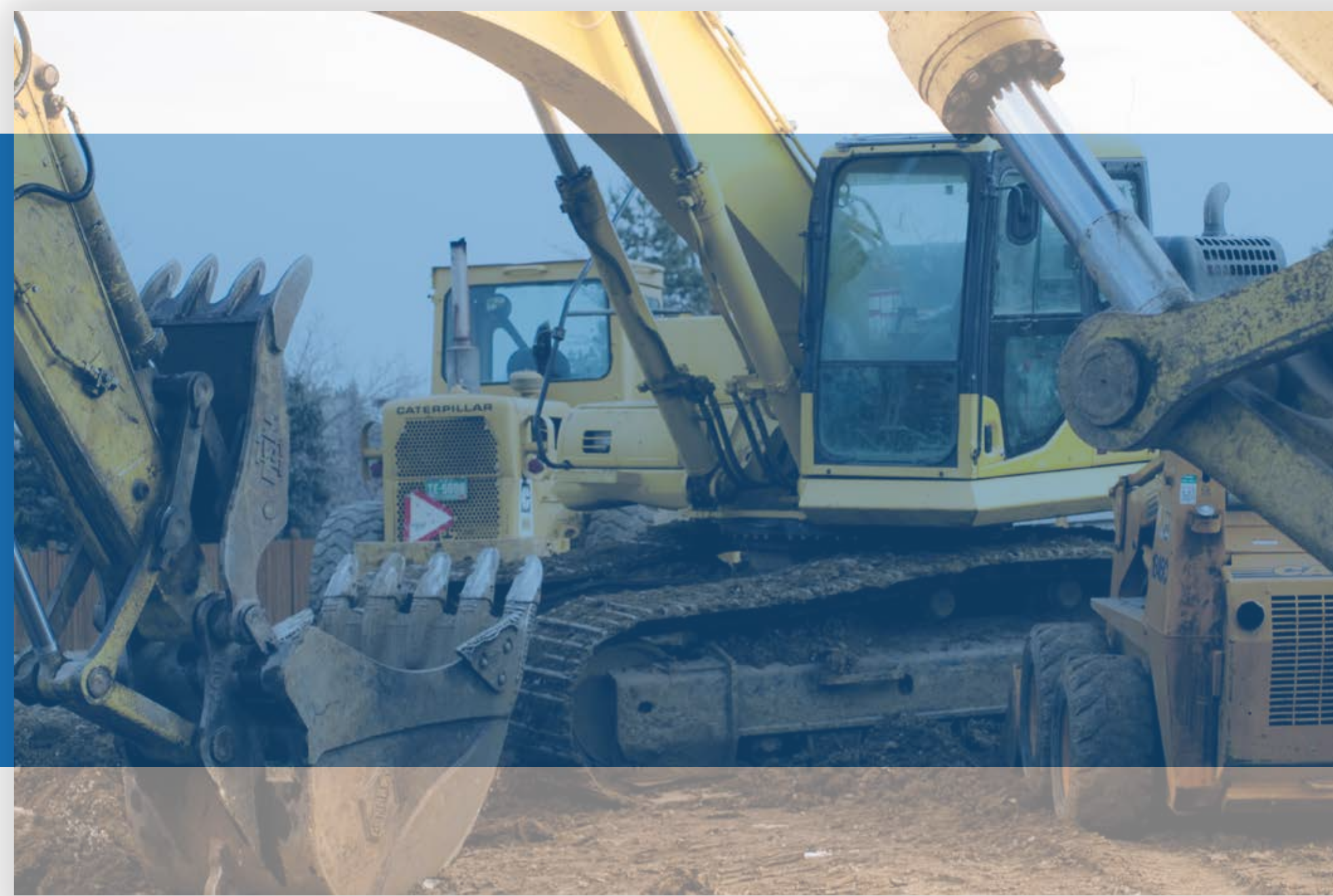


GTC-E Series



TARGETED APPLICATIONS



Rail Mass Transit

Heavy Equipment



Factory Automation



Instrumentation

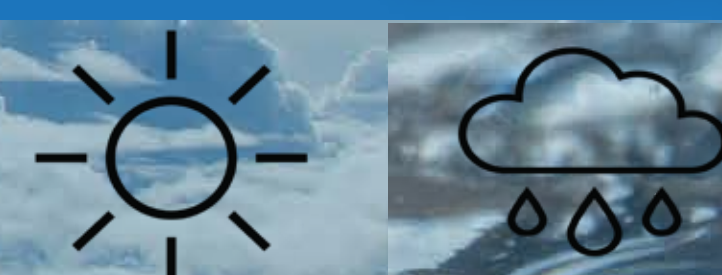


Robotics



FEATURES

- 1/3 turn reverse bayonet
- Quick positive coupling
- Audible and tactile indication of full coupling
- High shock and vibration capabilities
- Ruggedized
- Crimp termination
- RADSOK® socket contacts available
- Operating temperature: -40° C to +125° C
- 500 mating cycles



Specification	
Current Rating	250 A
Operating Temperature	-40° C to +125° C
Ingress Protection	500 VAC
Flammability	IP67 mated
Mating Mechanism	UL94-VO
RoHS Compliant	1/3 turn
Durability	2000 cycles
Contacts	Crimp
Material	Aluminum
Vibration	15g
Mechanical Shock	50G's



✓	✓		Front mounting
	✓	✓	Rear mounting
			Straight plug
✓	✓	✓	R Class w/grommet <small>(except 02)</small>
	✓	✓	F Class, clamp w/grommet
	✓	✓	A Class, Accy Adapter
	✓	✓	RMI/AMI Class for cable glands
✓	✓	✓	Electroless nickel
✓	✓	✓	Black zinc cobalt
✓	✓	✓	Gray zinc nickel

The Amphenol Industrial GTC-E series boasts an aluminum shell and a robust reverse bayonet coupling system, ensuring superior environmental sealing against moisture and contaminants with compatible accessories. Featuring RADSOK® contacts for convenient field installation via crimp termination, it adheres to RoHS and REACH compliance standards with appropriate plating. Designed to excel in high shock and vibration environments, it meets rigorous performance criteria with up to 500 mating cycles at operating temperatures down to -40° C.

