

CONNECTOR INSTALLATION INSTRUCTIONS

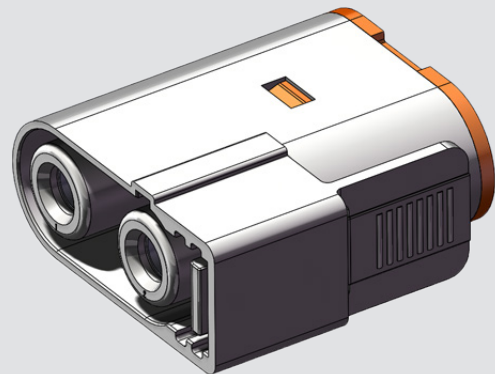
Amphe-PD™ Gen 2 5.7mm

Part Number

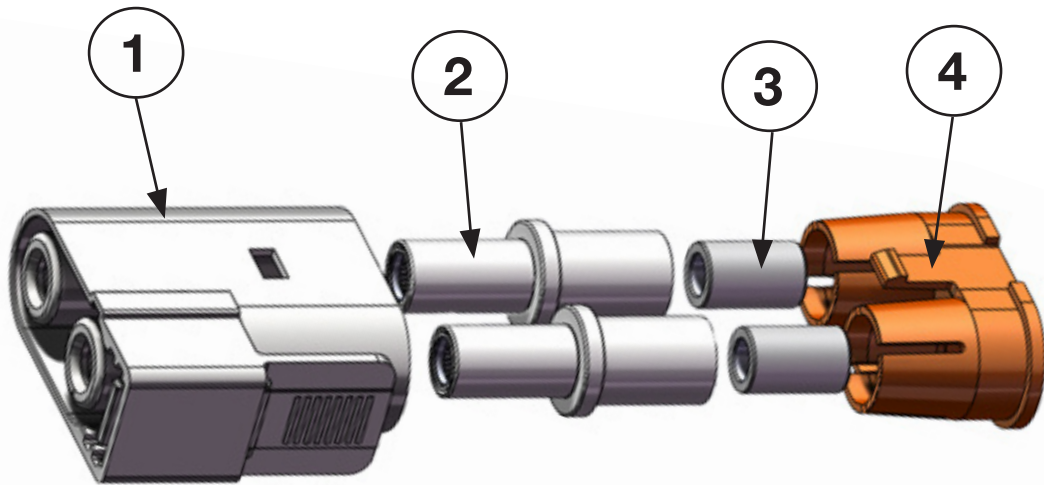
C10-766084-06

C10-766084-04

C10-766084-02



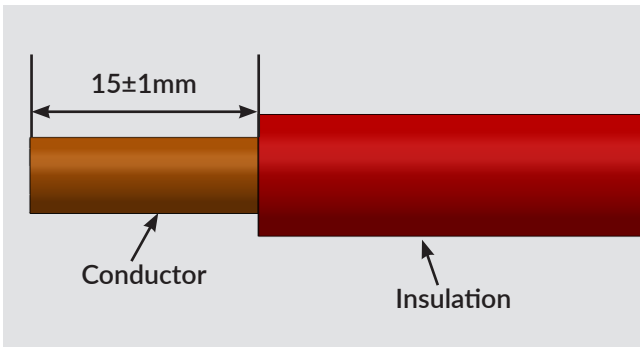
Part 1: Package Contents



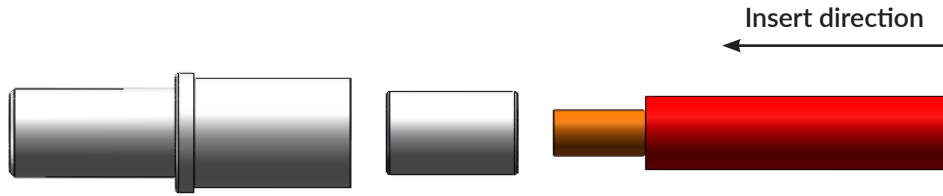
- 1: Plug housing
- 2: Terminal
- 3: Sleeve -- Not needed for 2AWG
- 4: Clip

Part 2: Plug assembly

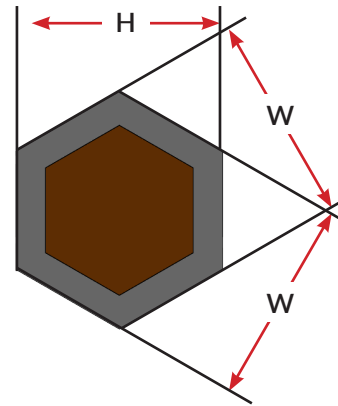
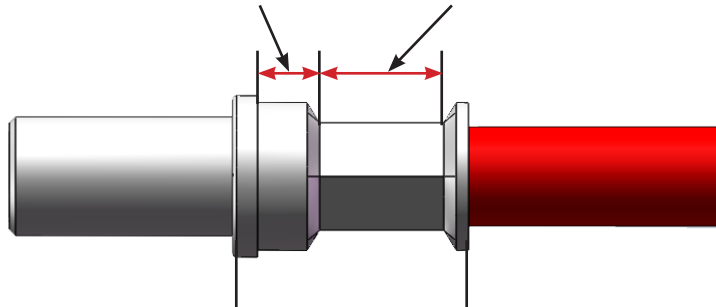
Step 1: 2AWG/4AWG/6AWG wire cutting stripping jacket



Step 2: Insert the cable and sleeve into the terminal hole and crimp (sleeve not needed for 2AWG)

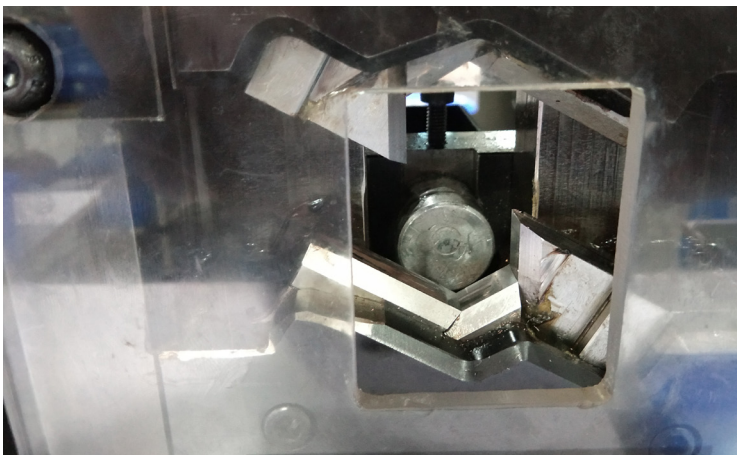


Recommend Crimp distance is 5mm Recommended crimp length $10 \pm 0.5\text{mm}$

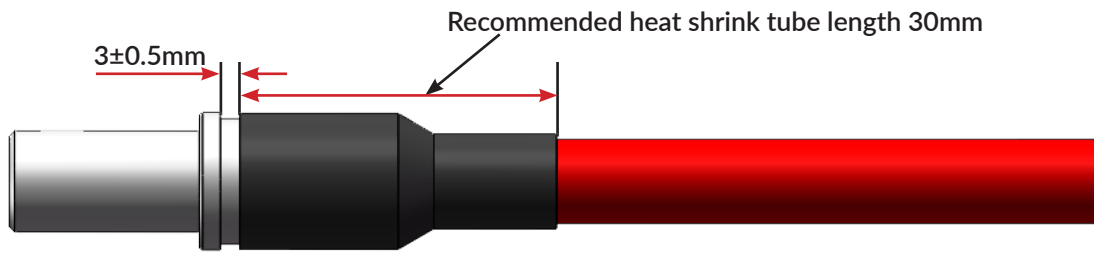


Cable Size	Recommended Crimp Height (H)	Recommended Crimp Width (W)	Cable Pullout Force
2AWG	$7.9 \pm 0.1\text{mm}$	$7.9 \pm 0.1\text{mm}$	801.0N Min.
4AWG	$8.8 \pm 0.1\text{mm}$	$8.8 \pm 0.1\text{mm}$	623.0N Min.
6AWG	$9.0 \pm 0.1\text{mm}$	$9.0 \pm 0.1\text{mm}$	445.0N Min.

Recommended crimping tool: Terminal-specific crimping machine
2AWG /4AWG/6AWG



Step 3: Assemble heat shrink tubing onto the tail end of the crimp area



Recommended tool: Heat gun



The heat shrink tubing full recovery temperature: 175 °C

Step 4: Install cable of crimped terminals past the retainer.



Step 5: Insert the terminal of the pressed wire into the housing with retainer.

