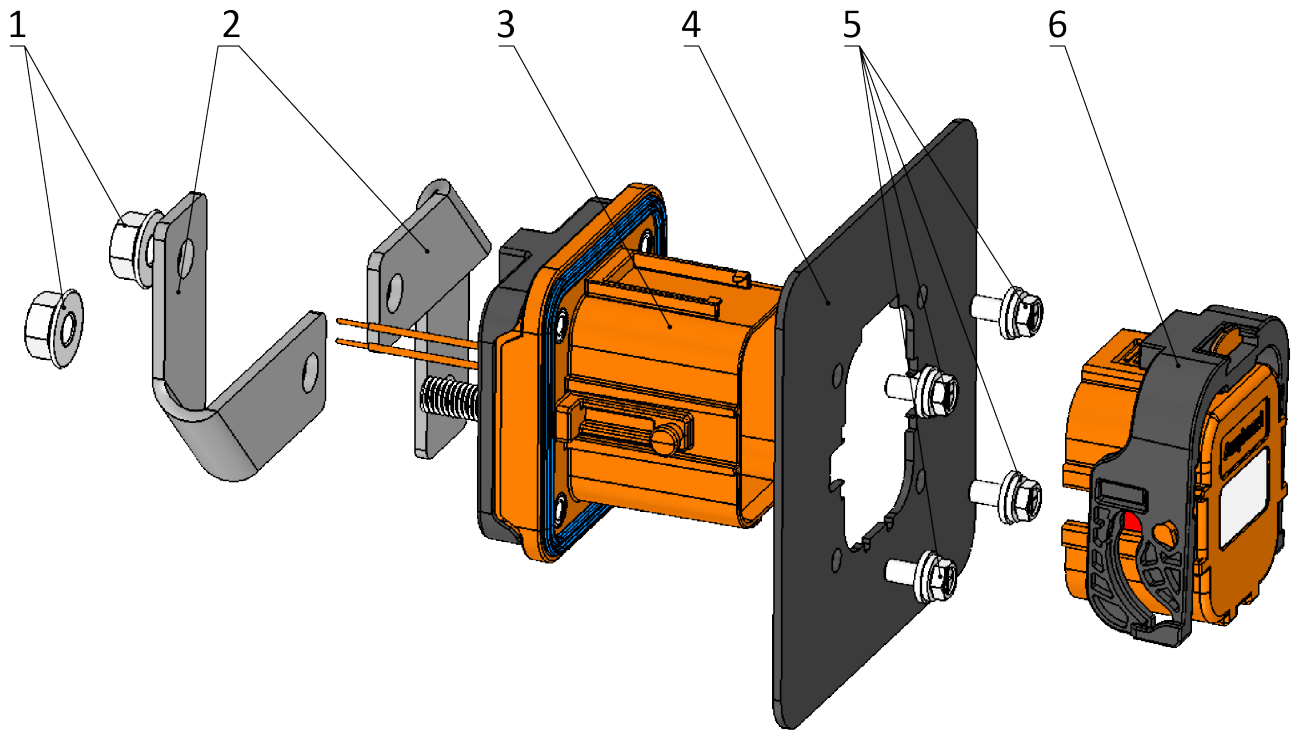


1500V 350A MSD Assembly Instructions



Rev.	Date	Description
A	2023/05/20	Initial Release



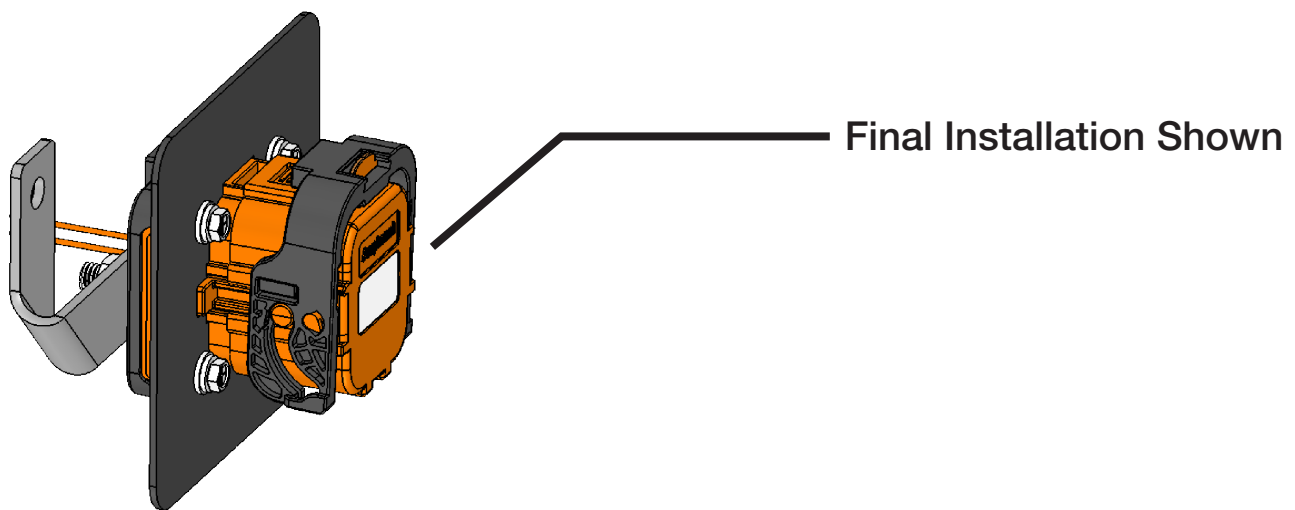
EXPLANATION
1. M8 Nut (Customer to prepare)
2. Soft copper plate (Customer to prepare)
3. MSD Receptacle
4. Installation panel (Customer to prepare)
5. M5 screws (Customer to prepare)
6. MSD plug

1: Mounting Requirements

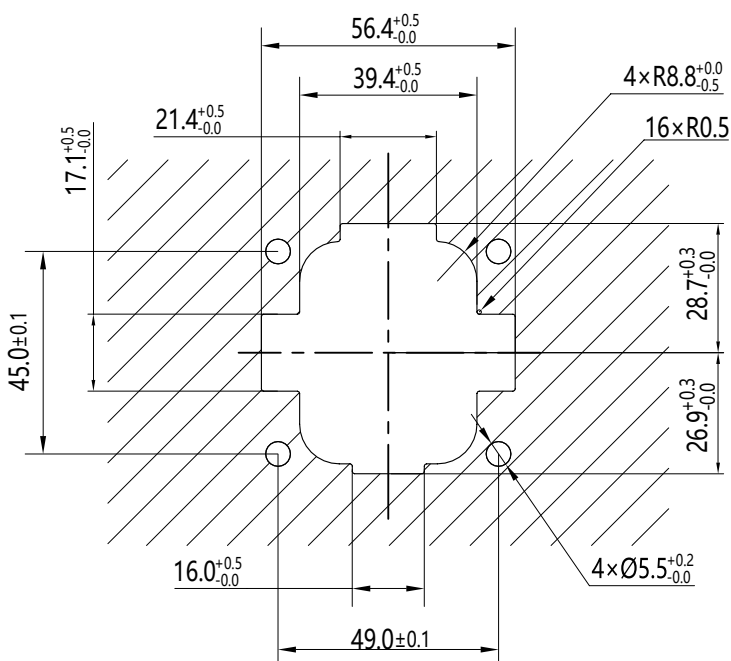
When installing the receptacle, the customer needs to prepare 4* M5 screws assemblies (including spring washers and flat washers). Insert the receptacle through the mounting panel, secure the receptacle and mounting panel with 4* M5 screws, The recommended screw specifications are 8+A+Bmm, A is the thickness of the mounting panel, B is the thickness of the spring washer), the recommended installation torque is 5.0 ± 0.5 N•m.

It is recommended the copper plate at the bottom of the receptacle be connected to the soft copper plate with M8 screws and the recommended tightening torque is (14 ± 1) N•m.

Connect the plug to the receptacle.



Recommended installation panel size for receptacle



RECOMMENDED THICKNESS OF THE INSTALLATION PANEL: ≤ 4 MM
SURFACE FLATNESS: $\nabla 0.2$, SURFACE ROUGHNESS: $\sqrt{3.2}$