

YOUR CHALLENGE



**ARE YOUR KILOWATTS TURNING INTO MEGAWATTS?
DEVELOPMENT SPEEDS EXCEEDING 670,616,629 SOL?
HAS YOUR AC GONE DC?**



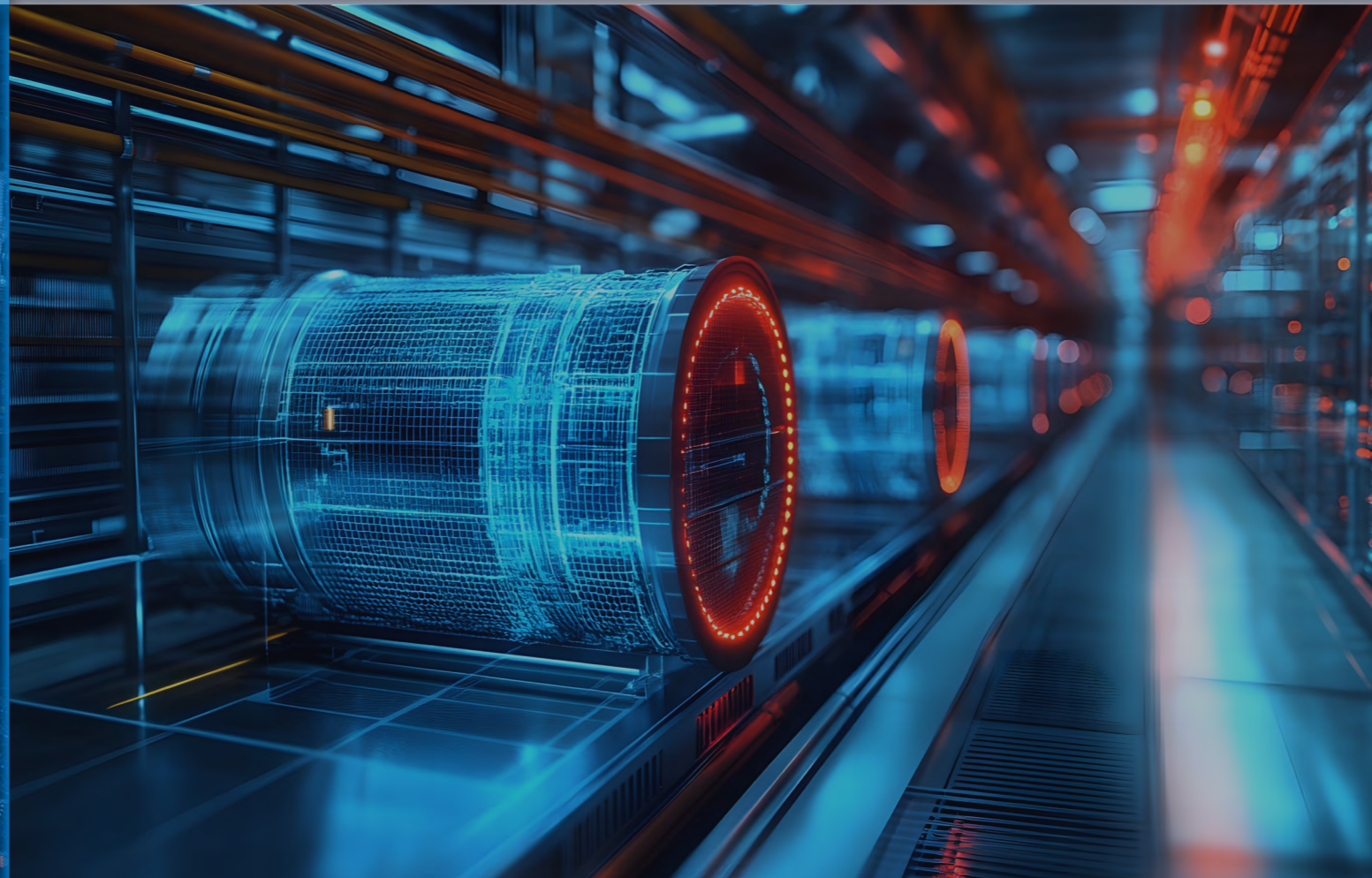
BUILT TO SCALE WITH YOU



**OUR KW BRIDGE IS SUPPORTING MEGAWATT RACKS
OUR DEVELOPMENT SPEED JUST HIT HYPERSPACE
AC/DC EITHER WAY, OUR AMPS ARE ON ELEVEN**

FEATURED SOLUTIONS FOR POWER & COOLING

AMPHE-GTR | AMPHE-PRB | GMT | RAD-Z | KW BRIDGE | UQD & UQDB |
BMQC | LQC | MQC | SHQD | RADSOK® | AC WHIPS | DC WHIPS |
SURLOK PLUS® | IEC 60309



- APPLICATION ENGINEERING & 3D MODELS
- GLOBAL DISTRIBUTION & QUICK TURN SAMPLES
- CUSTOM HARNESSING & VALUE ADD ASSEMBLIES

CONTACT

➤ John Griffiths | jgriffiths@amphenol-aio.com | 607.643.3681

➤ Albert Pinto | apinto@amphenol-aio.com | 408.662.5005

DATA CENTER POWER & COOLING

Modern data centers push the limits of power density, thermal control, and uptime. Amphenol Industrial Operations delivers a cohesive interconnect toolkit with high-current power, rugged high-speed data, and leak-tight liquid cooling products to simplify builds and service. From reverse-bayonet power connectors and compression-lug terminations to stainless quick disconnects and IP-rated data interfaces, our portfolio accelerates deployment while reducing thermal rise and maintenance risk.



» RACK & BUSWAY POWER

We offer a comprehensive range of high-current interconnects designed for rack power shelves, busway tap-offs, PSU cradles, switchgear, and UPS systems. The GTC Series delivers rugged reverse-bayonet coupling with harsh-environment sealing for dependable, field-friendly installation. SurLok Plus® offers compact, touch-safe compression-lug terminations from 50-500 A for fast, low resistance power connections. RADSOK® PowerBlok™ and RADSOK® contacts provide ultra-low contact resistance to reduce thermal rise and maximize efficiency. Amphe-PRB and Amphe-GTR add robust high-power interfaces with secure locking and flexible termination options for continuous operation in demanding environments. Together, these solutions enable reliable, maintainable, and scalable power distribution across modern rack and busway architectures.

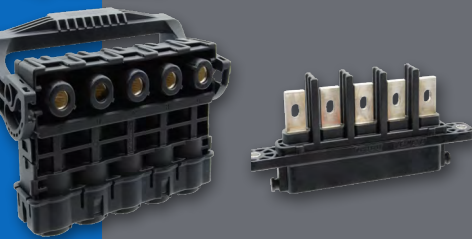
SURLOK PLUS®

Up to 200A fast and robust connections for rack, PDU and busway.



SURLOK PLUS® M

Designed to meet the requirements of UL 1682 for 3 phase 480VAC branch circuits. Up to 200A.



RADSOK® 309

Optional IEC 60309 pin-and-sleeve connector and cable assembly configurations available.



» WHERE IT FITS

Rack power shelves, busway tap-offs, PSU cradles, switchgear, UPS systems, power distribution panels, and industrial power architectures.

AMPHE-PRB

High-power circular interface with secure locking and flexible terminations for robust panel and rack connections. Up to 70A.



AMPHE-GTR

Compact, durable high-current connector designed for quick serviceability in demanding power environments up to 100A.



» KEY BENEFITS

- Faster maintenance with secure, tactile mate/lock mechanisms
- Low milliohm losses to minimize thermal rise and improve system efficiency
- Flexible termination options including crimp, busbar, compression-lug, and screw interfaces
- Rugged housings and sealing for harsh-environment power distribution
- Scalable high-current solutions supporting modular rack and busway architectures

High Power Connectors & Cable Assemblies

Amphenol Industrial Operations is the trusted source for mission critical datacenter power applications. Our RADSOK power products have led the way as ampacity requirements have steadily increased to 100A to 200A and higher. The RADSOK® team originated quick customization of server power interconnect to help deliver high power in space efficient solutions. Our team pioneered the solutions that are common today such as ultra sonic termination of multiple high strand count flexible wires that have enabled flexible very high current solutions. Our innovative techniques for accommodating tough packaging restrictions set the standard for what can be achieved in modern datacenter equipment.

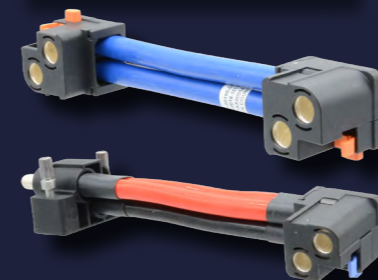
POWERBLOK



GMT



RAD-Z



RADSERV

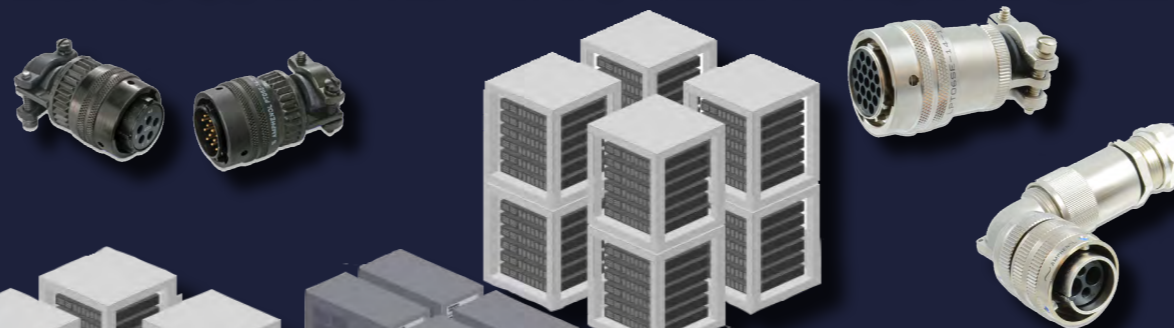


WHERE IT FITS

Top-of-rack switches, edge gateways, ruggedized compute modules, and industrial networking in MEC and distributed environments

PT SERIES

Proven cylindrical interconnect families offering mixed signal and power capability, IP-rated sealing, and durable coupling systems for reliable connectivity in industrial networking and MEC applications



MAX-M12

A/B/D/P coded variants; IP67; metal/plastic shells; right angle & straight

KEY BENEFITS

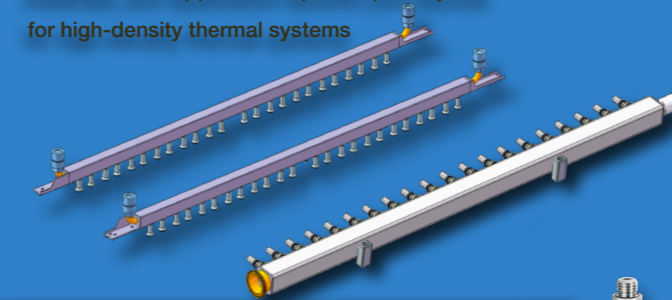
- EMC-aware shielding and precision coding to maintain signal integrity and prevent mismatching
- IP-rated environmental sealing for reliable performance in edge, outdoor, and harsh industrial installations
- Flexible board-mount, cable-mount, and panel-mount configurations to support diverse system architectures

Thermal Management & Liquid Cooling

Our liquid cooling portfolio supports high-density thermal architectures with custom manifolds that help balance coolant distribution and maintain durable, pressure-rated flow paths. Our OCP compliant quick disconnect ecosystem includes UQD, UQDB (blind-mate), BMQC, LQC, SHQD, MQD and our custom OMQD series. Dry-break performance and hot-swappable connectivity support faster service events while helping protect uptime in modern data center and AI cooling loops. Complementing the fluid interconnects our ePower-Lite® series provide a compact, lightweight power connection option for adjacent electrification needs within thermal management and supporting infrastructure.

CUSTOM MANIFOLDS

Engineered coolant distribution blocks with multi-channel architectures, corrosion-resistant materials, and application-specific port layouts for high-density thermal systems



UQD, UQDB, SHQD, LQC, MQD, BMQC, OMQD

Stainless couplings; drip-less operation; OCP-aligned interoperability



WHERE IT FITS

ORV 3 rack, AI Rack Solutions, cold-plate loops, GPU trays, CDU manifolds, optical module cooling, rack-level coolant distribution, energy-storage battery trays, and high-capacity server/accelerator modules requiring custom manifolds

E-POWER LITE

Compact power interconnect delivering reliable, low-resistance power in tight spaces for pumps, fans, chillers, and liquid-cooling distribution equipment.

KEY BENEFITS

- Leak-tight, quick serviceability during hot swaps
- Broad chemical/fluid compatibility; corrosion resistance
- Modularization for faster rack builds & service windows
- Customizable multi-channel manifold designs for balanced flow distribution
- Supports high temperature/pressure conditions; durable stainless, copper, aluminum, or engineered-plastic construction
- Integrates QDs, sensors, and welded interfaces for optimized liquid-cooling architecture