

# Amphenol®



## GTC-E Series Connectors

GTC-E series is designed for commercial and industrial environments requiring a rugged bayonet style and field installation connector for heavy duty power and signal applications.

GTC-E series can mate with Amphenol GT Series Reversed Bayonet Coupling Connectors. The insulators are made of fire proof plastic material.

Common applications include rail mass transit, heavy equipment, automation, instrumentation and robotics.

### Features:

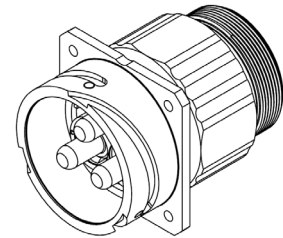
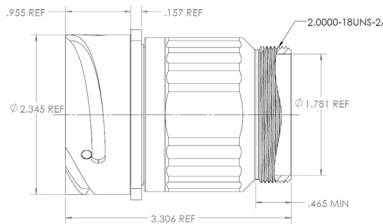
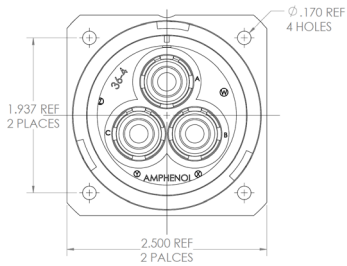
- 1/3 Turn Reverse Bayonet
- Quick positive coupling
- Audible and tactile indication of full coupling
- High shock and vibration capabilities
- Rugged construction
- Crimp Termination
- RADSOK® socket contacts available
- Operating Voltage: 500 VAC
- Current Rate: 150 A
- Operating Temperature: -40°C to +125°C
- 500 Mating Cycles

GTC-E series is developed from Amphenol GT Series Reversed Bayonet Coupling Connectors. GTC-E series inherits most of the key features from GT series, which makes it fit for harsh environment. GTC-E series uses UL94-V0 hard plastic insert and removable contact. This new structure highly simplifies installation process and saves labor time. It perfectly fits for field installation and makes maintaining easier

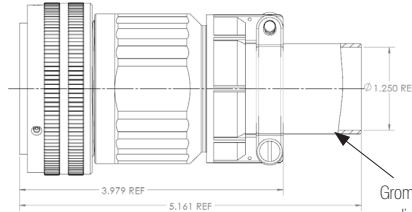
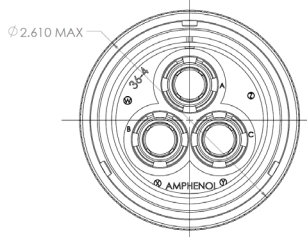
**Benefits:**

- 1/3 Turn Reverse Bayonet
- Quick positive coupling
- Audible and tactile indication of full coupling
- High shock and vibration capabilities
- Rugged construction
- Crimp Termination
- RADSOK® socket contacts available
- Operating voltage: 500 VAC
- Current rate: 150A
- Operating Temperature: -40°C to +125°C
- 500 Mating Cycles

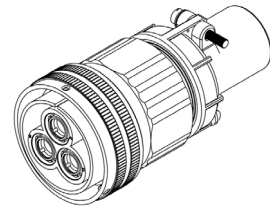
**Wall Mounting Receptacle**



**Straight Plug**



Grommet for individual wire sealing range 0.415 - 0.550 inch



| How To Order   |             |                           |                            |  |                    |         |        |                                       |     |                    |
|----------------|-------------|---------------------------|----------------------------|--|--------------------|---------|--------|---------------------------------------|-----|--------------------|
| 1              | 2           | 3                         | 4                          | 5  | 6                  | 7       |        |                                       |     |                    |
| GTCE           | 030         | R                         | 36-4                       | P  | W                  | 072     |        |                                       |     |                    |
| PRODUCT SERIES | SHELL STYLE | CONNECTOR CLASS           | Shell Size And Arrangement | CONTACT STYLE                                | ALTERNATE POSITION | PLATING |        |                                       |     |                    |
|                | 030         | Panel Mounting Receptacle | R                          | Adapter with individual wire sealing grommet | 36-4               | P       | Pin    | W,X,Y and Z. Omit for normal position | 023 | Electroless Nickel |
|                | 06          | Straight Plug             | F                          | Clamp with individual sealing grommet        |                    | S       | Socket |                                       | 025 | Black Zinc cobalt  |
|                |             | Omit                      | No Accessory               |  |                    |         |        |                                       | 072 | Gray Zinc Nickel   |

Notice: Specifications are subject to change without notice. Contact your nearest Amphenol Corporation Sales Office for the latest specifications. All statements, information and data given herein are believed to be accurate and reliable but are presented without guarantee, warranty, or responsibility of any kind, expressed or implied. Statements of suggestions concerning possible use of our products are made without representation or warranty that any such use is free of patent infringement and are not recommendations to infringe any patent. The user should assume that all safety measures are indicated or that other measures may not be required. Specifications are typical and may not apply to all connectors.

For further information on your individual application requirements, contact: Amphenol Corporation

North America:  
Amphenol Industrial Operations  
180 N. Freeport Drive, Plant 4  
Nogales, AZ 85621  
Tel: (888) 364-9011  
Fax: (520) 285-5134

Europe:  
Amphenol Industrial Operations Europe  
Via Barbaiana 5  
1-20020 Lainate (MI) Italy  
Tel: +39 02 93254.204  
Fax: +39 02 93254.444

Middle East:  
Amphenol Middle East Enterprises FZE  
Office C-37 PO Box 21107  
Ajman Free Zone, UAE  
Tel: +9 716-7422494  
Fax: +9 716-7422941

Asia:  
Amphenol Technology (Zhuhai) Co., Ltd.  
No. 63 Xing Han Road, San Zao Town  
Jin Wan District, Zhuhai City, China 519040  
Tel: +86 756-3989760  
Fax: +86 756-3989768

Email: tech@amphenol-aio.com

Email: info@amphenol-aio.com

Email: jhussain@amphenol-industrial.com

Email: enquiry@amphenol-aio.com