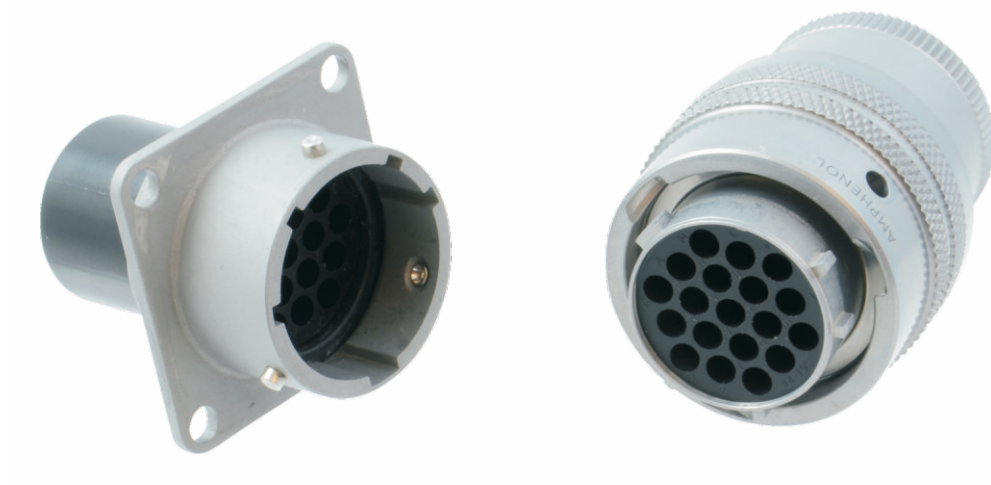


Amphenol[®]



LPT 圆形连接器系列

Amphenol

目 录

公司简介	01
LPT系列产品介绍	02
市场应用	03
技术参数	04
选型编码/外壳类型	05
压接端子订购指南	06
机加工端子订购指南	07
服务等级	08
防误插键位	09
胶芯排位	10
产品尺寸	12
组装说明	17

公司介绍



安费诺工业部

安费诺工业部(AIO), 是安费诺集团的一个分支机构, 她是全球知名的圆形连接器制造商。安费诺工业部的产品线包括方形、标准小型、光纤、EMI/EMP滤波器以及各种特殊应用的连接器。

从1932年开始生产连接器至今, 安费诺工业部一直是恶劣环境互连系统应用领域无可争议的领导者。其创新产品之一的RADSOK®端子技术可提供比普通同等大小端子多约50%的电流。使用该RADSOK®技术的安费诺连接器其性能将轻松超越市场上相似产品。

安费诺工业部(总部)座落于美国纽约州的卡茨基尔山脚下的Sidney小镇, 占地面积307,000平方英尺。该综合基地拥有超过1000名员工, 采用最先进的制造技术, 通过了ISO9001认证且符合MIL-STD-790标准要求。



安费诺科技(珠海)有限公司

安费诺科技(珠海)有限公司是安费诺工业部的生产工厂, 服务于一系列工业市场, 包括但不限于工厂自动化、交通运输、重型设备、替代能源、储能、服务器/数据通信和配电系统等。

安费诺科技(珠海)有限公司占地面积28,470平方米, 配置有数控、电镀、注塑和装配车间。该工厂专门设计和制造具有大电流、高密度和满足中到高压电气特性以及恶劣环境应用要求的工业连接器。

凭借行业领先的工程、设计和制造专业技术, 安费诺科技(珠海)有限公司在其创新互连方面已获得30多项实用新型专利。很多产品都通过了诸如UL、IEC/TUV、ATEX、IECEX和MA等独立标准认证。该工厂也获得了ISO 9001、ISO 14001和IATF 16949标准认证。

LPT 系列连接器产品简介



什么是LPT系列连接器？

LPT是基于军工MIL-C-26482 I 系列标准和安费诺原有PT系列产品开发的，结构改进、成本更具优势的金属外壳连接器。

产品特性和优势

- 铝合金外壳兼顾轻量 and 金属机械性能
- 提供多种外壳电镀选项
- 3爪冲压压接端子
- 提供机加工端子选项
- 市场现货供应
- 快速卡口连接
- 5键位盲插
- 连接后防水等级达到 IP67&IP69K
- 抗高频振动和冲击
- 工作温度范围: -40°C to 125°C
- 与安费诺PT系列产品互配
- PT 标准外壳经过了市场的长期可靠性验证
- UL、TUV认证进行中

结构特点

5种外壳：

- ① 盒式安装外壳
- ② 锁紧螺母外壳
- ③ 直插头
- ④ 墙式安装插座
- ⑤ 空中对接插座

3种表面处理方式：

- ① 镀黑锌
- ② 镀镍
- ③ 镀灰色锌镍

4种旋转定位角度：

胶芯旋转 W, X, Y, Z

压接端子尺寸：

- ① #12: 14-12 (2.00-4.00mm²)
- ② #16: 18-16 (0.75-1.50mm²)
- ③ #20: 24-20 (0.25-0.50mm²)

④ 如需大电流端子或其他端子需求，请咨询销售团队

市场应用

LPT 系列连接器广泛应用于一般环境和恶劣环境下，市场包括但不限于以下：

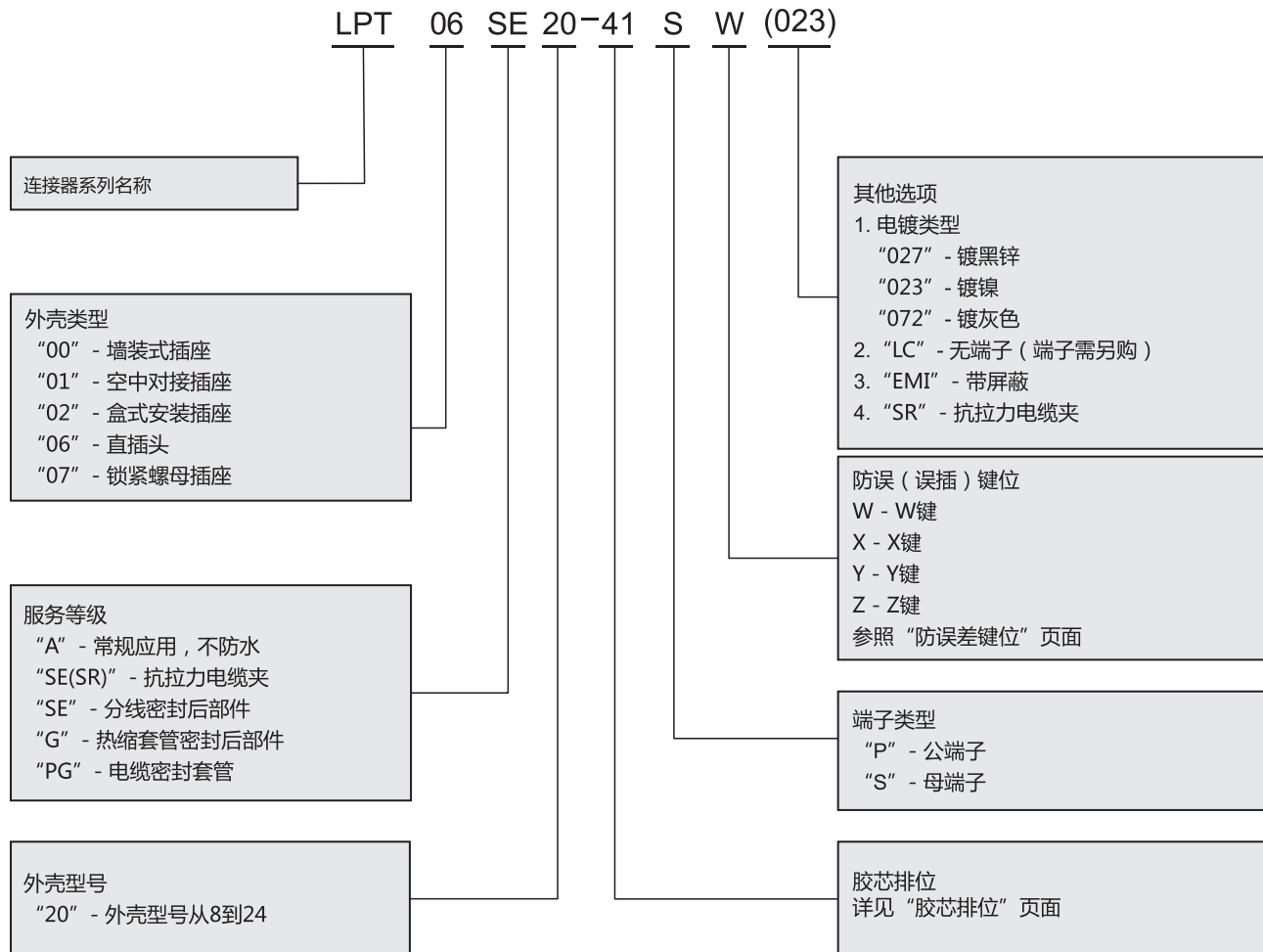
- 工业仪器仪表
- 安防监控
- 通信
- 机器人/工厂自动化
- 工业控制
- 储能
- 混合动力/纯电动汽车
- 重型设备
- 轨道交通



基本技术参数

外壳材料	铝合金	
胶芯材料	塑料	
端子	材料	铜合金
	电镀	镀锡/镍/金
	接线方式	压接
温度范围	-40°C to +125°C	
防护等级	在连接状态下防水等级为IP67&IP69K 未连接状态下可提供基础防尘盖或IP67等级的防水盖	
测试电流	20#端子 5A	
	16#端子 13A	
	12#端子23A, 12#RADSOK 端子35A	
推荐工作交流电压	I # 250V	
	II# 500V	
测试交流电压	I # 1500V	
	II# 2300V	
插配次数	500次	
盐雾测试	1. 电镀黑锌（无导电）：48H 2. 镀镍（导电）：48H 3. 镀灰色锌镍（导电）：500H	
抗振动	依据测试程序EIA-364-28	
温度冲击	依据测试程序EIA-364-32	
RoHS	符合	

选型编码



外壳类型

墙装式插座
LPT00



空中对接插座
LPT01



盒式安装插座
LPT02



直插头
LPT06



锁紧螺母 (八方盘) 插座
LPT07

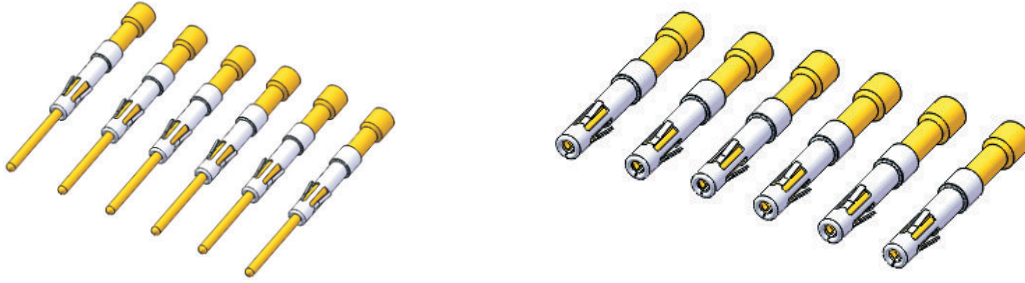


LPT压接端子订购指南



型号	电流 (A)	公端/母端	接线规格		电镀	料号	PCS/卷
			AWG	mm ²			
#20	5	PIN	22-20	0.34-0.50	Tin plating	LPTC-SF-20P-20-1	3000
					Ni plating	LPTC-SF-20P-20-2	
					Gold flash	LPTC-SF-20P-20-3	
					10u"gold plating	LPTC-SF-20P-20-4	
					30u"gold plating	LPTC-SF-20P-20-5	
		SOCKET	22-20	0.34-0.50	Tin plating	LPTC-SF-20S-20-1	
					Ni plating	LPTC-SF-20S-20-2	
					Gold flash	LPTC-SF-20S-20-3	
					10 u"gold plating	LPTC-SF-20S-20-4	
					30 u"gold plating	LPTC-SF-20S-20-5	
#16	13	PIN	16-18	0.75-1.50	Tin plating	UPTC-SF-16P-16-1	
					Ni plating	UPTC-SF-16P-16-2	
					Gold flash	UPTC-SF-16P-16-3	
					10u"gold plating	UPTC-SF-16P-16-4	
					30u"gold plating	UPTC-SF-16P-16-5	
			20-22	0.34-0.50	Tin plating	UPTC-SF-16P-20-1	
					Ni plating	UPTC-SF-16P-20-2	
					Gold flash	UPTC-SF-16P-20-3	
					10u"gold plating	UPTC-SF-16P-20-4	
					30u"gold plating	UPTC-SF-16P-20-5	
		SOCKET	16-18	0.75-1.50	Tin plating	UPTC-SF-16S-16-1	
					Ni plating	UPTC-SF-16S-16-2	
					Gold flash	UPTC-SF-16S-16-3	
					10u"gold plating	UPTC-SF-16S-16-4	
					30u"gold plating	UPTC-SF-16S-16-5	
			20-22	0.34-0.50	Tin plating	UPTC-SF-16S-20-1	
					Ni plating	UPTC-SF-16S-20-2	
					Gold flash	UPTC-SF-16S-20-3	
					10u"gold plating	UPTC-SF-16S-20-4	
					30u"gold plating	UPTC-SF-16S-20-5	
#12	23	PIN	12~14	2.00-3.50	Tin plating	LPTC-SF-12P-12-1	
					Ni plating	LPTC-SF-12P-12-2	
					Gold flash	LPTC-SF-12P-12-3	
					10u"gold plating	LPTC-SF-12P-12-4	
					30u"gold plating	LPTC-SF-12P-12-5	
		SOCKET	12~14	2.00-3.50	Tin plating	LPTC-SF-12S-12-1	
					Ni plating	LPTC-SF-12S-12-2	
					Gold flash	LPTC-SF-12S-12-3	
					10u"gold plating	LPTC-SF-12S-12-4	
					30u"gold plating	LPTC-SF-12S-12-5	

LPT机加工端子订购指南



型号	电流 (A)	公端/母端	接线规格		电镀	料号
			AWG	mm ²		
#20	5	PIN	22-20	0.34-0.50	Tin plating	LPTC-MA-20P-20-1
					Ni plating	LPTC-MA-20P-20-2
					Gold flash	LPTC-MA-20P-20-3
					10u"gold plating	LPTC-MA-20P-20-4
					30u"gold plating	LPTC-MA-20P-20-5
		SOCKET	22-20	0.34-0.50	Tin plating	LPTC-MA-20S-20-1
					Ni plating	LPTC-MA-20S-20-2
					Gold flash	LPTC-MA-20S-20-3
					10 u"gold plating	LPTC-MA-20S-20-4
					30 u"gold plating	LPTC-MA-20S-20-5
#16	13	PIN	16-18	0.75-1.50	Tin plating	UPTC-MA-16P-16-1
					Ni plating	UPTC-MA-16P-16-2
					Gold flash	UPTC-MA-16P-16-3
					10u"gold plating	UPTC-MA-16P-16-4
					30u"gold plating	UPTC-MA-16P-16-5
			20-22	0.34-0.50	Tin plating	UPTC-MA-16P-20-1
					Ni plating	UPTC-MA-16P-20-2
					Gold flash	UPTC-MA-16P-20-3
					10u"gold plating	UPTC-MA-16P-20-4
					30u"gold plating	UPTC-MA-16P-20-5
		SOCKET	16-18	0.75-1.50	Tin plating	UPTC-MA-16S-16-1
					Ni plating	UPTC-MA-16S-16-2
					Gold flash	UPTC-MA-16S-16-3
					10u"gold plating	UPTC-MA-16S-16-4
					30u"gold plating	UPTC-MA-16S-16-5
			20-22	0.34-0.50	Tin plating	UPTC-MA-16S-20-1
					Ni plating	UPTC-MA-16S-20-2
					Gold flash	UPTC-MA-16S-20-3
					10u"gold plating	UPTC-MA-16S-20-4
					30u"gold plating	UPTC-MA-16S-20-5
#12	23	PIN	12~14	2.00-3.50	Tin plating	LPTC-MA-12P-12-1
					Ni plating	LPTC-MA-12P-12-2
					Gold flash	LPTC-MA-12P-12-3
					10u"gold plating	LPTC-MA-12P-12-4
					30u"gold plating	LPTC-MA-12P-12-5
		SOCKET	12~14	2.00-3.50	Tin plating	LPTC-MA-12S-12-1
					Ni plating	LPTC-MA-12S-12-2
					Gold flash	LPTC-MA-12S-12-3
					10u"gold plating	LPTC-MA-12S-12-4
					30u"gold plating	LPTC-MA-12S-12-5

服务等级

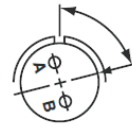
LPT连接器服务等级说明



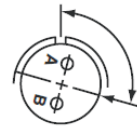
"A"	常规应用：底壳螺纹连接MS3057电缆夹导管附件，非防水
"SE(SR)"	抗拉力电缆夹：为单根芯线提供耐环境的抗拉力电缆夹和防水防潮垫圈，也提供额外的线束支持
"SE"	分线密封后部件：为单根芯线提供耐环境的防水防潮螺母和垫圈
"G"	热缩套管密封后部件：可接热缩套管，并可选增防水垫提高防水性能
"PG"	电缆密封接头：压紧电缆密封接头为护套电缆提供防水防潮保护

防误插键位

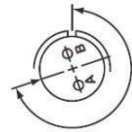
为避免在同时使用多个相同尺寸和胶芯排布的连接器的产生误插的问题，我们提供了对应的图标显示胶芯交替旋转位置。如右图所示，公胶芯正面在外壳内沿从正常键位朝顺时针方向旋转，母胶芯正面沿正常键位从逆时针方向以相同角度旋转。



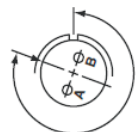
Position W



Position X



Position Y

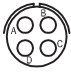
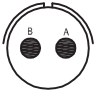
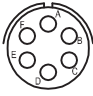
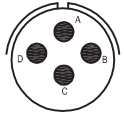


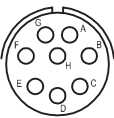
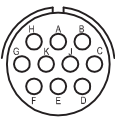
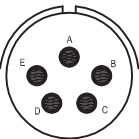
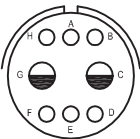
Position Z

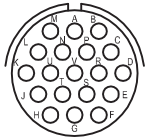
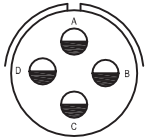
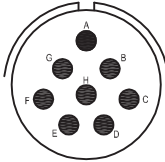
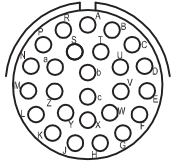
胶芯旋转键位					
外壳型号	胶芯排布	转角度数 (°)			
		W	X	Y	Z
8	8-4	45	97	184	-
10	10-2	45	90	315	
10	10-6	90	-	-	-
12	12-4	38	-	-	-
12	12-8	90	112	203	292
12	12-10	60	155	270	295
14	14-5	40	92	184	273
14	14-8	48	162	189	312
14	14-19	30	165	315	
14	14-AA	45	-	-	-

胶芯旋转键位					
外壳型号	胶芯排布	转角度数 (°)			
		W	X	Y	Z
16	16-8	54	152	180	331
16	16-26	60	-	275	338
18	18-5	55	97	263	315
18	18-8	180	-	-	-
18	18-11	62	119	241	340
18	18-32	85	138	222	265
20	20-16	238	318	333	347
20	20-41	45	126	225	-
22	22-55	30	142	226	314
24	24-31	90	225	255	-

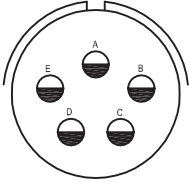
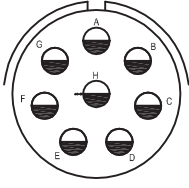
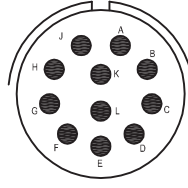
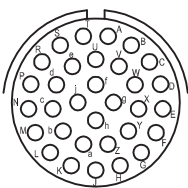
胶芯排位

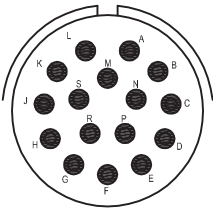
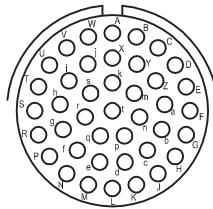
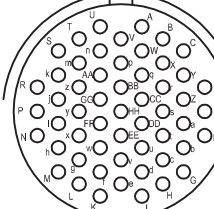
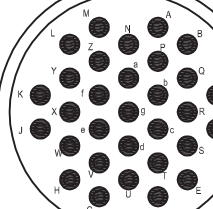
芯数	4	2	6	4
排列图				
	8-4	10-2	10-6	12-4
服务等级	I	I	I	I
端子数量	4	2	6	4
端子号	20	16	20	16

芯数	8	10	5	8
排列图				
	12-8	12-10	14-5	14-8
服务等级	I	I	II	I
端子数量	8	10	5	6 2
端子号	20	20	16	20 12

芯数	19	4	8	26
排列图				
	14-19	14-AA	16-8	16-26
服务等级	I	I	II	I
端子数量	19	4	8	26
端子号	20	12	16	20

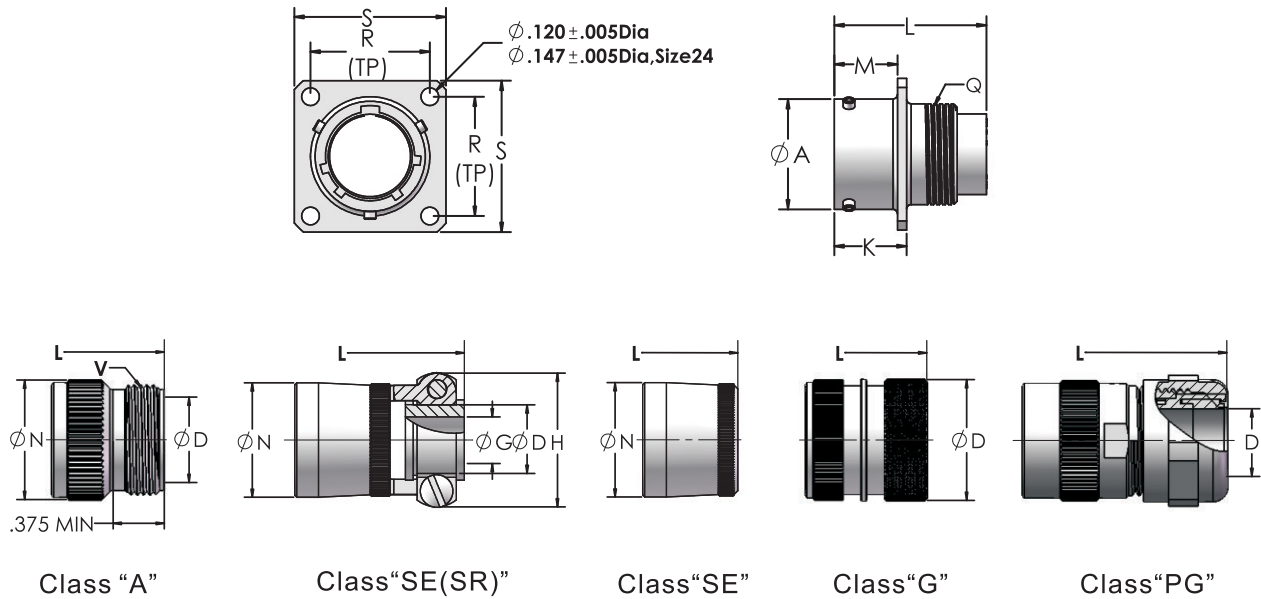
胶芯排位

芯数	5	8	11	32
排列图				
	18-5	18-8	18-11	18-32
服务等级	II	I	II	I
端子数量	5	8	11	32
端子号	12	12	16	20

芯数	16	41	55	31
排列图				
	20-16	20-41	22-55	24-31
服务等级	II	I	I	I
端子数量	16	41	55	31
端子号	16	20	20	16

产品尺寸

LPT00(墙装式插座及尾附件)

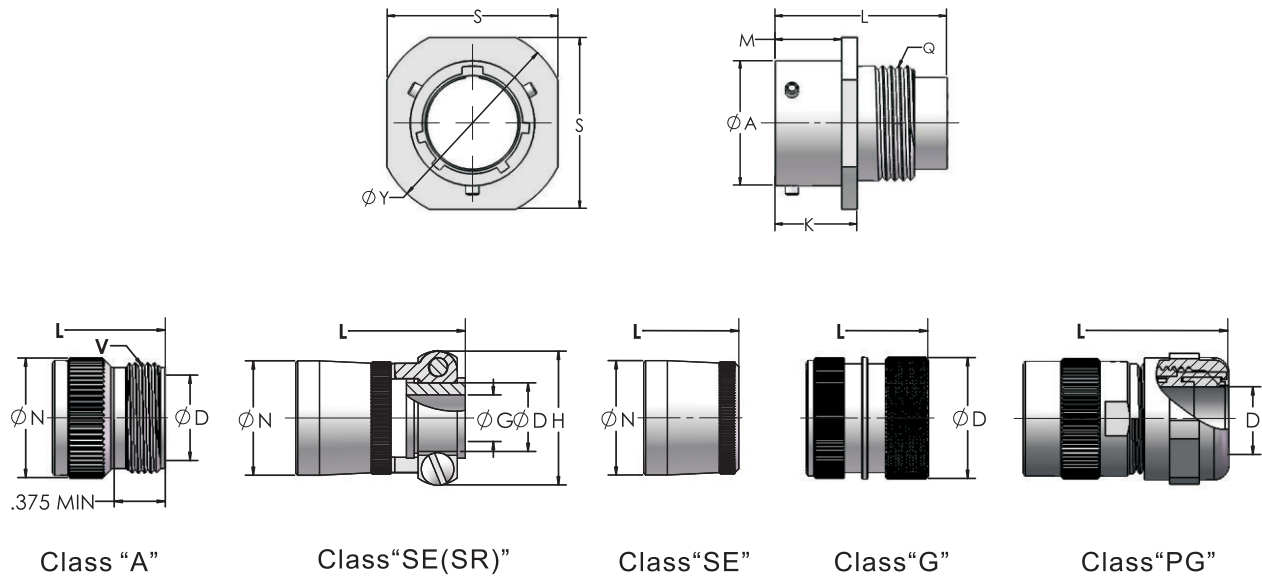


外壳型号	插座正面视图		插座侧面视图						CLASS "A"				CLASS "SE(SR)"	
	R	S	A	M	K	L		Q	D	L	N	V	D	G
			+ .001 - .005	+ .010 - .000	+ .020 - .010	Max.								
8	.594	.812	.473	.431	.493	1.270	1.056	.4375-28UNEF	.297	1.633	.590	.5000-28UNEF	.240	.125
10	.719	.938	.590	.431	.493	1.270	1.056	.5625-24NEF	.421	1.633	.717	.6250-24NEF	.302	.188
12	.812	1.031	.750	.431	.493	.127	1.056	.6875-24NEF	.546	1.633	.834	.7500-20UNEF	.428	.312
14	.906	1.125	.875	.431	.493	.127	1.056	.8125-20UNEF	.663	1.633	.970	.8750-20UNEF	.552	.375
16	.969	1.219	1.000	.431	.493	1.270	1.056	.9375-20UNEF	.787	1.633	1.088	1.0000-20UNEF	.615	.500
18	1.062	1.312	1.125	.431	.493	1.270	1.056	1.0625-18NEF	.879	1.633	1.216	1.1875-18NEF	.740	.625
20	1.156	1.438	1.250	.556	.650	1.332	1.164	1.1875-18NEF	1.014	1.674	1.332	1.1875-18NEF	.740	.625
22	1.250	1.562	1.375	.556	.650	1.332	1.164	1.3125-18NEF	1.134	1.674	1.460	1.4375-18NEF	.928	.750
24	1.375	1.688	1.500	.589	.683	1.332	1.164	1.4375-18NEF	1.259	1.674	1.585	1.4375-18NEF	.990	.800

外壳型号	CLASS "SE(SR)"				CLASS "SE"			CLASS "G"		CLASS "PG"		
	H	L		N	L		N	L	N	N	D	L
		Max.			Max.							
8	.812	2.354	2.202	.550	1.746	1.538	.560	1.768	.620	.571	3-6.5	2.309
10	.875	2.354	2.202	.675	1.746	1.538	.685	1.768	.730	.814	4-8	2.309
12	1.000	2.354	2.202	.803	1.746	1.538	.813	1.768	.939	.814	4-8	2.309
14	1.125	2.354	2.202	.920	1.746	1.538	.930	1.768	.971	.930	5-10	2.309
16	1.188	2.486	2.272	1.047	1.746	1.538	1.057	1.768	1.179	1.120	10-14	2.309
18	1.438	2.486	2.272	1.165	1.746	1.750	1.175	1.768	1.266	1.180	13-18	2.309
20	1.438	2.684	2.470	1.290	1.918	1.750	1.301	1.980	1.427	1.296	13-18	2.385
22	1.625	2.684	2.470	1.418	1.918	1.750	1.430	1.980	1.522	1.496	18-25	2.385
24	1.719	2.684	2.470	1.543	1.918	1.750	1.555	1.980	1.644	1.562	18-25	2.385

产品尺寸

LPT01(空中对接式插座及尾附件)

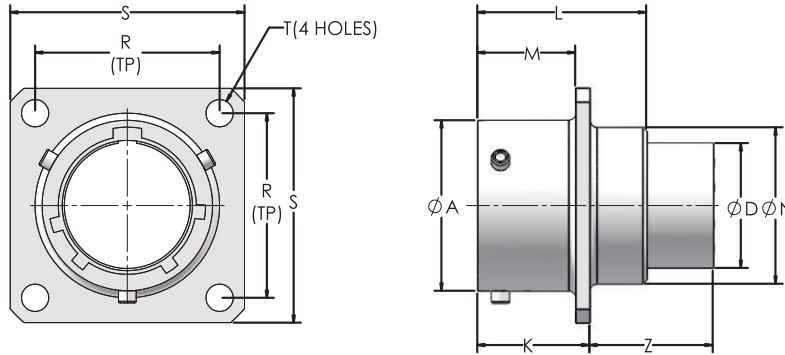


外壳型号	插座正面视图		插座侧面视图						CLASS "A"				CLASS "SE(SR)"	
	S	Y	A	M	K	L		Q	D	L	N	V	D	G
	$\pm .020$	$\pm .020$	+ .001 - .005	+ .010 - .000	+ .020 - .010	Max. PIN SOCKET		螺纹 Class 2A	Min.	Max.	Max.	螺纹 Class A	Min.	Max.
8	.812	.938	.473	.400	.494	1.270	1.056	.4375-28UNEF	.297	1.633	.590	.5000-28UNEF	.240	.125
10	.938	1.062	.590	.400	.494	1.270	1.056	.5625-24NEF	.421	1.633	.717	.6250-24NEF	.302	.188
12	1.031	1.156	.750	.400	.494	.127	1.056	.6875-24NEF	.546	1.633	.834	.7500-20UNEF	.428	.312
14	1.125	1.250	.875	.400	.494	.127	1.056	.8125-20UNEF	.663	1.633	.970	.8750-20UNEF	.552	.375
16	1.219	1.344	1.000	.400	.494	1.270	1.056	.9375-20UNEF	.787	1.633	1.088	1.0000-20UNEF	.615	.500
18	1.312	1.438	1.125	.400	.494	1.270	1.056	1.0625-18NEF	.879	1.633	1.216	1.1875-18NEF	.740	.625
20	1.438	1.562	1.250	.535	.650	1.332	1.164	1.1875-18NEF	1.014	1.674	1.332	1.1875-18NEF	.740	.625
22	1.562	1.688	1.375	.535	.650	1.332	1.164	1.3125-18NEF	1.134	1.674	1.460	1.4375-18NEF	.928	.750
24	1.688	1.812	1.500	.568	.683	1.332	1.164	1.4375-18NEF	1.259	1.674	1.585	1.4375-18NEF	.990	.800

外壳型号	CLASS "SE(SR)"				CLASS "SE"			CLASS "G"		CLASS "PG"		
	H	L		N	L		N	L	N	N	D	L
	Max.	Max.		Max.	Max.		Max.	Max.	Max.	REF	线缆范围 (mm)	REF
8	.812	2.354	2.202	.550	1.746	1.538	.560	1.768	.620	.571	3-6.5	2.309
10	.875	2.354	2.202	.675	1.746	1.538	.685	1.768	.730	.814	4-8	2.309
12	1.000	2.354	2.202	.803	1.746	1.538	.813	1.768	.939	.814	4-8	2.309
14	1.125	2.354	2.202	.920	1.746	1.538	.930	1.768	.971	.930	5-10	2.309
16	1.188	2.486	2.272	1.047	1.746	1.538	1.057	1.768	1.179	1.120	10-14	2.309
18	1.438	2.486	2.272	1.165	1.746	1.750	1.175	1.768	1.266	1.180	13-18	2.309
20	1.438	2.684	2.470	1.290	1.918	1.750	1.301	1.980	1.427	1.296	13-18	2.385
22	1.625	2.684	2.470	1.418	1.918	1.750	1.430	1.980	1.522	1.496	18-25	2.385
24	1.719	2.684	2.470	1.543	1.918	1.750	1.555	1.980	1.644	1.562	18-25	2.385

产品尺寸

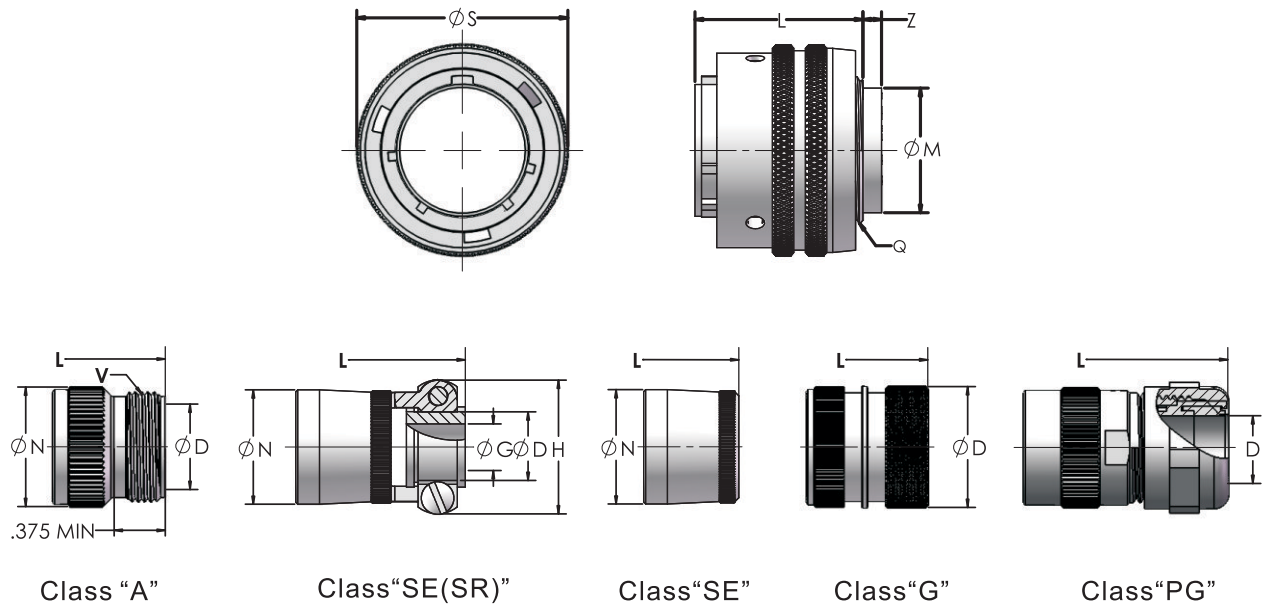
LPT02 (盒式安装插座)



外壳型号	插座正面视图			插座侧面视图							
	R	S	T	A	D	K	L	M	N	Z	
			±.005	+ .001 - .005	Max.	+ .020 - .010	Max.	+ .020 - .010	Dia. Max.	Max. PIN SOCKET	
8	.594	.812	.120	.473	.326	.493	.825	.431	.449	.777	.563
10	.719	.938	.120	.590	.443	.493	.825	.431	.573	.777	.563
12	.812	1.031	.120	.750	.557	.493	.825	.431	.699	.777	.563
14	.906	1.125	.120	.875	.682	.493	.825	.431	.823	.777	.563
16	.969	1.219	.120	1.000	.807	.493	.825	.431	.949	.777	.563
18	1.062	1.312	.120	1.125	.908	.493	.825	.431	1.073	.777	.563
20	1.156	1.438	.120	1.250	1.033	.650	1.076	.556	1.199	.682	.514
22	1.250	1.562	.120	1.375	1.158	.650	1.076	.556	1.323	.682	.514
24	1.375	1.688	.147	1.500	1.283	.683	1.109	.589	1.449	.649	.481

产品尺寸

LPT06 (直插头及尾附件)

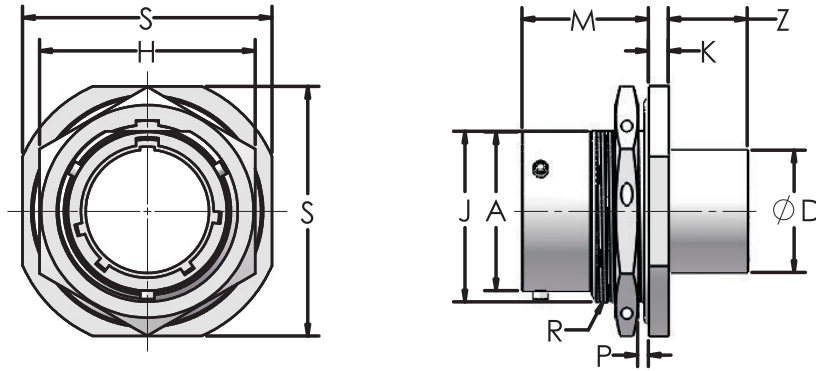


外壳型号	插头 正面视图	插头侧面视图					CLASS "A"				CLASS "SE(SR)"	
	S	L	M	Q	Z	D	L	N	V	D	G	
	Max.	Max.	Max.	螺纹 Class 2A	Max. PIN SOCKET	Min.	Max.	Max.	螺纹 Class A	Min.	Max.	
8	.750	.928	.326	.4375-28UNEF	.324 .110	.326	1.615	.590	.5000-28UNEF	.240	.125	
10	.859	.928	.443	.5625-24NEF	.324 .110	.443	1.615	.717	.6250-24NEF	.302	.188	
12	1.031	.928	.557	.6875-24NEF	.324 .110	.557	1.615	.834	.7500-20UNEF	.428	.312	
14	1.156	.928	.682	.8125-20UNEF	.324 .110	.682	1.615	.970	.8750-20UNEF	.552	.375	
16	1.281	.928	.807	.9375-20UNEF	.324 .110	.807	1.615	1.088	1.0000-20UNEF	.615	.500	
18	1.391	.928	.908	1.0625-18NEF	.324 .110	.908	1.615	1.216	1.1875-18NEF	.740	.625	
20	1.531	1.000	1.033	1.1875-18NEF	.248 .080	1.033	1.594	1.332	1.1875-18NEF	.740	.625	
22	1.656	1.000	1.158	1.3125-18NEF	.248 .080	1.158	1.594	1.460	1.4375-18NEF	.928	.750	
24	1.776	1.000	1.283	1.4375-18NEF	.248 .080	1.283	1.594	1.587	1.4375-18NEF	.990	.800	

外壳型号	CLASS "SE(SR)"			CLASS "SE"			CLASS "G"		CLASS "PG"			
	H	L		N	N	L		L	N	N	D	L
	Max.	Max.		Max.	Max.	Max.		Max.	Max.	REF	线缆范围 (mm)	REF
8	.812	2.336	2.122	.550	.560	1.728	1.520	1.750	.620	.571	3-6.5	2.291
10	.875	2.336	2.122	.675	.685	1.728	1.520	1.750	.730	.814	4-8	2.291
12	1.000	2.336	2.122	.803	.813	1.728	1.520	1.750	.939	.814	4-8	2.291
14	1.125	2.336	2.122	.920	.930	1.728	1.520	1.750	.971	.930	5-10	2.291
16	1.188	2.468	2.254	1.047	1.057	1.728	1.520	1.750	1.179	1.120	10-14	2.291
18	1.438	2.468	2.254	1.165	1.175	1.728	1.520	1.750	1.266	1.180	13-18	2.291
20	1.438	2.604	2.390	1.290	1.301	1.838	1.670	1.900	1.427	1.296	13-18	2.305
22	1.625	2.604	2.390	1.418	1.430	1.838	1.670	1.900	1.522	1.496	18-25	2.305
24	1.719	2.604	2.390	1.543	1.555	1.838	1.670	1.900	1.644	1.562	18-25	2.305

产品尺寸

LPT07 (锁紧螺母插座)



外壳型号	插座正面视图					插座侧面视图							
	H ±.016	S	A	D	J Flat	K	M	P 面板厚度		R 螺纹 Class 2A UNEF	Z		
			+.001	Dia.	+.001			+.011	Min.		Max.	Max.	
			-.005	Max.	-.010			-.010				PIN	SOCKET
8	.750	.938	.473	.326	.530	.125	.696	.062	.125	.5625-24	.450	.235	
10	.875	1.062	.590	.443	.655	.125	.696	.062	.125	.6875-24	.450	.235	
12	1.062	1.250	.750	.557	.818	.125	.696	.062	.125	.8750-20	.450	.235	
14	1.188	1.375	.875	.682	.942	.125	.696	.062	.125	1.0000-20	.450	.235	
16	1.312	1.500	1.000	.807	1.066	.125	.696	.062	.125	1.1250-18	.450	.235	
18	1.438	1.625	1.125	.908	1.191	.125	.696	.062	.125	1.2500-18	.450	.235	
20	1.562	1.812	1.250	1.033	1.316	.156	.884	.062	.250	1.3750-18	.292	.124	
22	1.688	1.938	1.375	1.158	1.441	.156	.884	.062	.250	1.5000-18	.292	.124	
24	1.816	2.062	1.500	1.283	1.566	.156	.917	.062	.250	1.6250-18	.260	.092	

组装说明（端子）

1. 剥线皮 (20# AWG LPT系列端子)

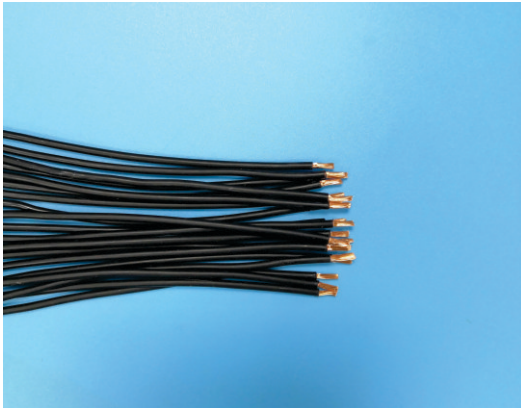
- 1) 工具:线切割机
- 2) 线材: 20~22 AWG
- 3) 根据长度要求切割线材, 剥除绝缘体, 推荐剥除长度:4.0~4.5mm



(线切割机)

2. 端子压线

- 1) 工具: 压接机
- 2) 准备剥好线皮的线和端子
- 3) 按照IPC-A-620标准将端子和线压接到一起

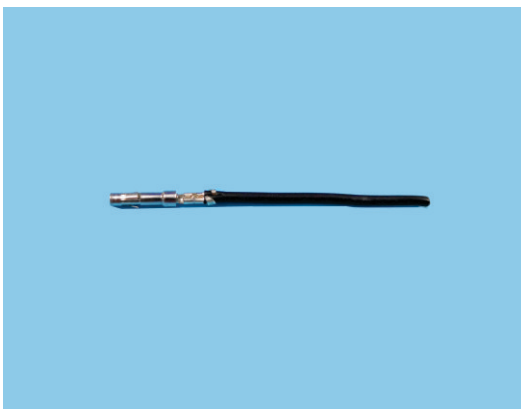


(剥好线皮后的线材)

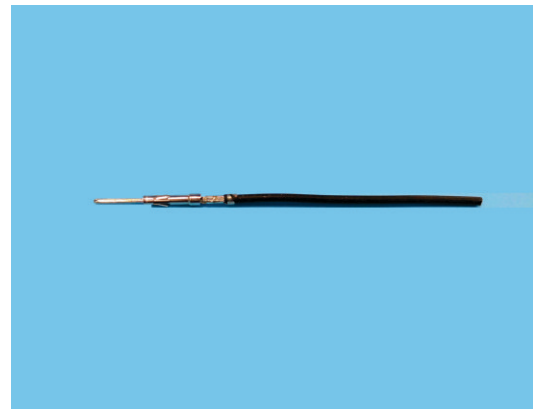


(压接机)

3. 压接端子



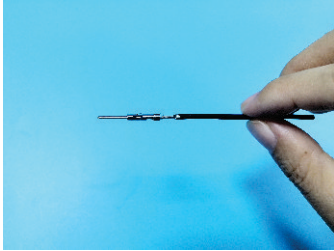
(母端)



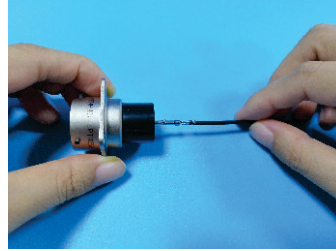
(公端)

组装说明（插座）

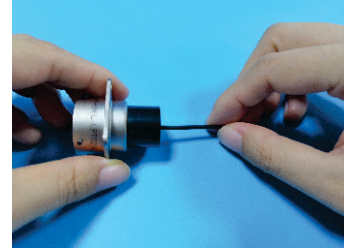
插座端子组装



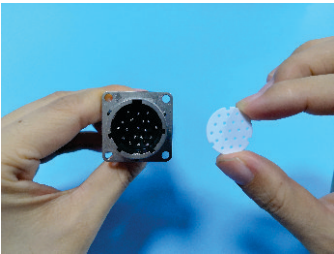
1. 取压接好端子的线。



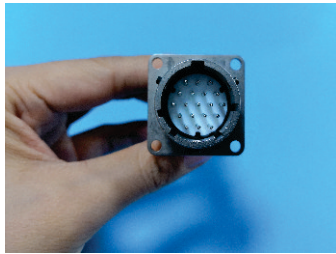
2. 将压接端子插入相应的胶芯位置。



3. 操作人员插入端子时通常会感觉到端子是否完全插入到位。目测检查连接器配合端确保所有端子完全插入到相同的深度（轻微拉动确认端子保持力）。



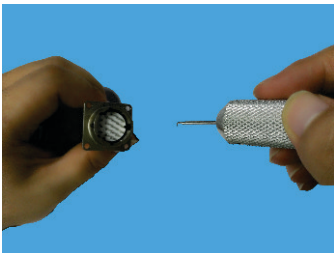
4. 将定位片插入到连接器前端合适的位置。



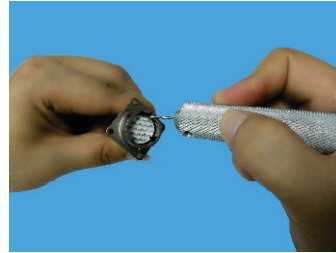
5. 将定位片推入到壳体前端的底部。

※定位片用于插座/插头公端子

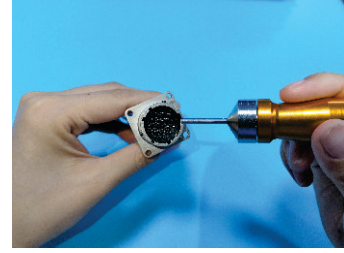
插座端子拆卸



1. 准备插入取出工具。



2. 用工具钩住定位片的凹槽从连接器中拔出定位器。



3. 将工具插入合适的端子用以拆卸。



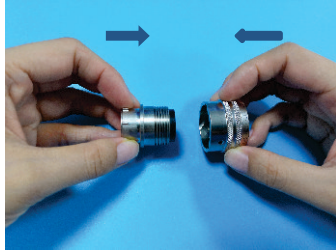
4. 将端子拆卸工具推至底部。



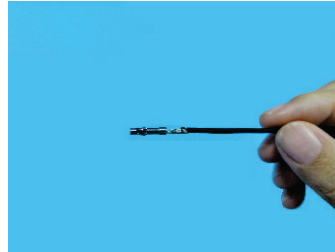
5. 在工具的手柄端施加压力，然后将端子从连接器后部拉出。

组装说明 (插头)

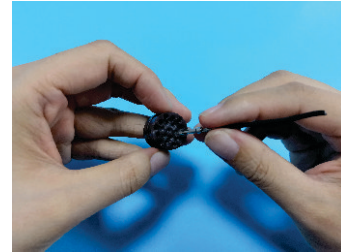
插头组装



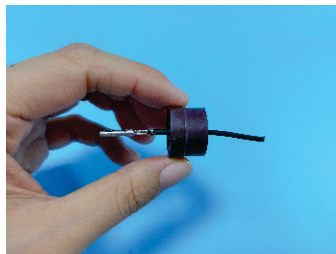
1. 将连接螺母与插头壳体组装在一起。



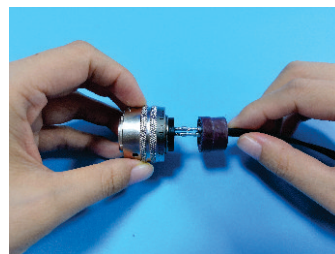
2. 准备压好端子的线。



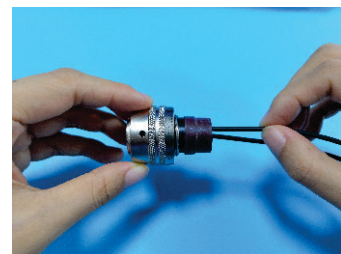
3. 握住端子将其推入封线体。



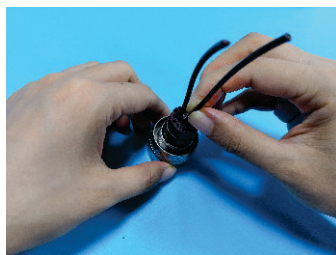
4. 插入至少2根电缆以固定其余端子的位置



5. 操作员插入端子通常会感觉端子到达其完全就位的位置。



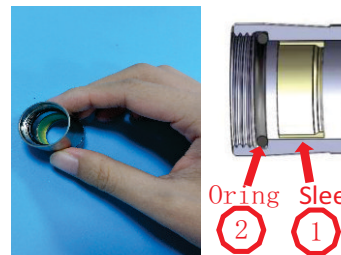
6. 推入封线体使其靠在壳体后部的绝缘体表面。



7. 继续装入剩余的端子。



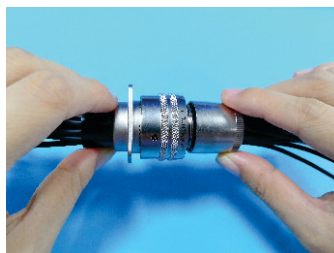
8. 待所有端子就位后，重新检查以确保封线体贴靠在绝缘体表面。



9. 将护线套和O型圈组装进后螺母。



10. 将螺母穿过线束。



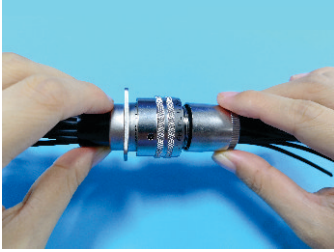
11. 将插头连接到插座以确保稳定性，并将后壳移至后螺纹。



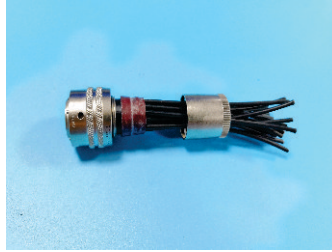
12. 通过螺纹拧紧后壳，然后从插座中取出。

组装说明（插头）

插头端子拆卸



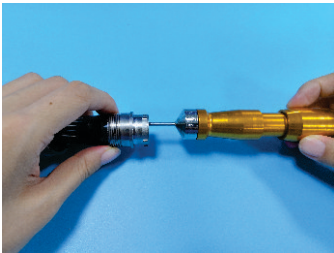
1. 将插头插入插座以确保稳定性。



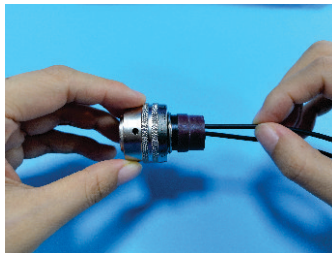
2. 从插头上松开并取下后壳。



3. 将插入/取出工具放在所需的端子上。



4. 推动工具直到它达到最低点。



5. 在工具的手柄端施加压力，然后将端子从连接器后部拉出。

North America

Amphenol Industrial Product Group

191 Delaware Avenue

Sidney, NY 13838-1395 - USA

Telephone: 888-364-9011 Fax: 520-397-7169

www.amphenol-industrial.com

Asia

安费诺科技（珠海）有限公司

地址：珠海市金湾区三灶镇二期科技工业园星汉路63号

电话：(86) 756-3989725 传真：(86) 756-3989768

www.amphenol-industrial.com



Notice: Specifications are subject to change without notice. Contact your nearest Amphenol Corporation Sales Office for the latest specifications. All statements, information and data given herein are believed to be accurate and reliable but are presented without guarantee, warranty, or responsibility of any kind expressed or implied. Statements or suggestions concerning possible use of our products are made without representation or warranty that any such use is free of patent infringement and are not recommendations to infringe any patent. The user should not assume that all safety measures are indicated or that other measures may not be required. Specifications are typical and may not apply to all connectors.